



FOR STARTERS



PCM
£1,200 PCM

MAIN COURSE

Nestled within the grounds of Bidford Grange Golf Club & Hotel complex, Lucy's Cottage is a detached home offering a rare blend of tranquillity and convenience. With picturesque views over the River Avon and a private rear garden that leads down to an arm of the river, this is a setting to truly unwind in.

Inside, the cottage offers well-proportioned living space. The ground floor features a bright, dual-aspect living room with a gas fire, two radiators, and plenty of natural light. A separate dining room provides access to the rear garden, making it ideal for entertaining or simply enjoying the outlook. The kitchen is well-equipped with wooden worktops, a range of units, and integrated appliances, including a fridge/freezer, dishwasher, washing machine, built-in oven, microwave, and a gas hob. Karndean flooring adds a stylish and practical finish, while a useful under-stairs cupboard provides additional storage.

Upstairs, there are two generous bedrooms and a large bathroom, complete with both a bath and a separate shower.

Outside, the property benefits from off-road parking for several vehicles, ensuring practicality alongside its scenic appeal.

This charming riverside cottage offers a unique opportunity for those seeking a peaceful setting with the added benefit of golf and leisure facilities nearby.

Available end of March.
Sorry, no pets



LOCATION

Please see Tenancy Information under the Lettings heading on the toolbar on our website.

KEY INGREDIENTS



Tenure



Council Tax
Band - E



EPC
Band - E



TBC

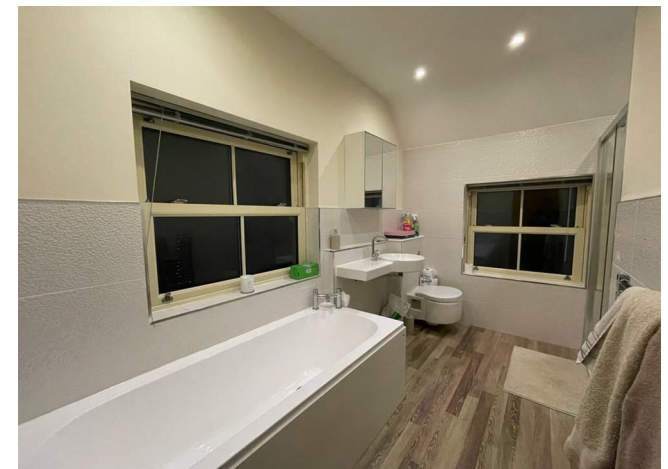


Heating system
TBC



TBC

WHY NOT TAKE
A LOOK INSIDE?
GIVE US A CALL
01789 414222



**FOR MORE INFO AND
TO SEE OUR OTHER
LOVELY PROPERTIES
CHECK OUT OUR WEBSITE**

MOVEWITHEDWARDS.CO.UK

**HAVE YOU GOT
A PROPERTY
TO SELL?
WE'D LOVE TO
HAVE A CHAT
01789 414222**

**DID YOU KNOW WE ALSO
DO MORTGAGES.
FOR FREE ADVICE
SPEAK TO
ONE OF OUR
CONSULTANTS**

